

Aurubis Finland Metals for Progress

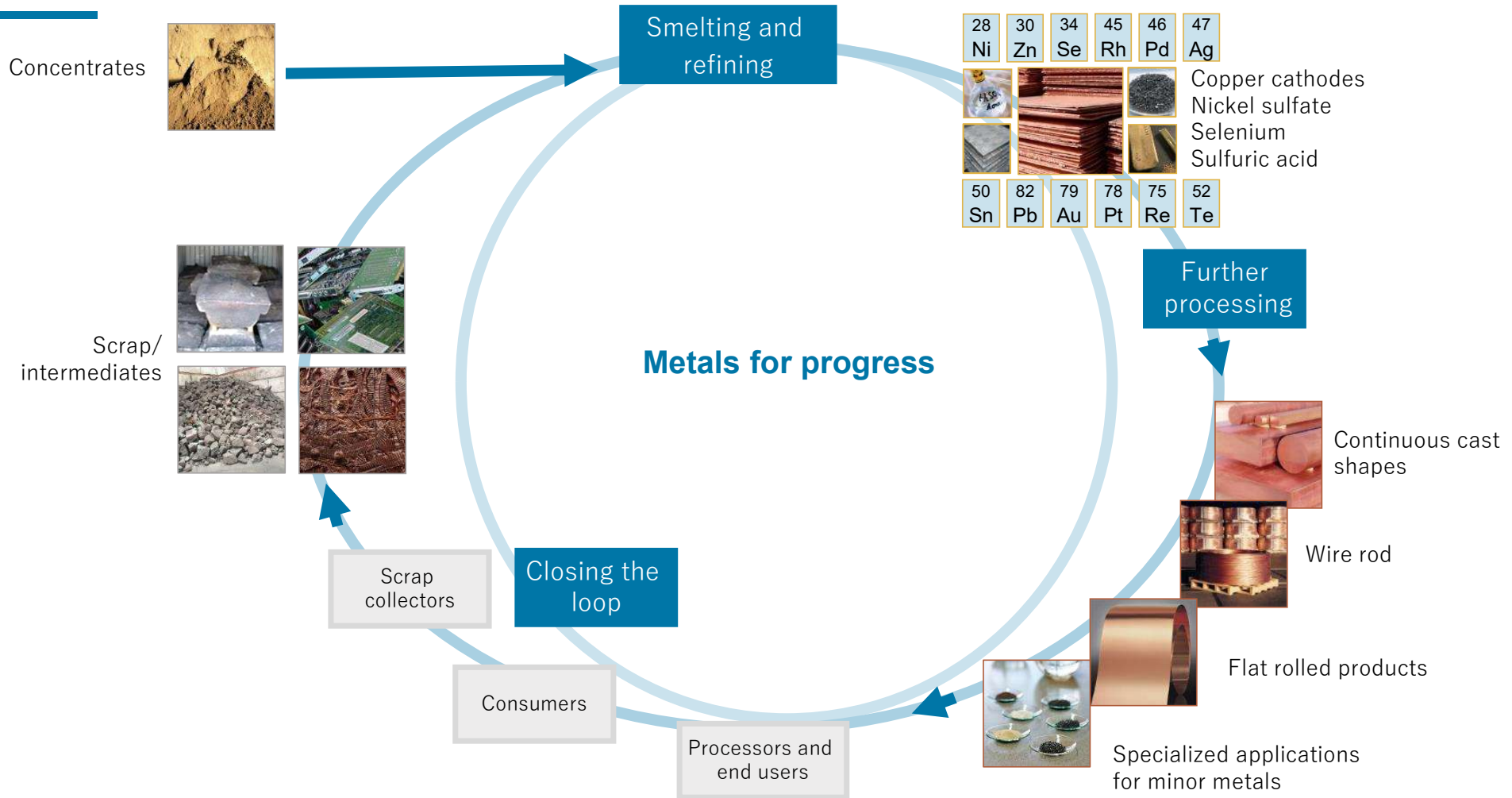
Rolled Copper Applications today and tomorrow

Juuso Järvinen
23.04.2026

 **Aurubis**



Closing the loop is part of Aurubis' integrated business model



More than just copper: Our extensive multimetal portfolio



Input			Output		
	FY 2023/24	change vs. prior year			
Concentrate processing ¹	2,266,000 t	-2 %	Cathode output	1,092,000 t	-2 %
Copper scrap/blister copper input ²	494,000 t	-4 %	Sulfuric acid output	2,094,000 t	-3 %
Other recycling materials	545,000 t	-4 %	Gold	46 t	-6 %
			Silver	921 t	0 %
			Lead	39,680 t	4 %
			Nickel	3,527 t	1 %
			Tin	8,874 t	13 %
			Zinc	12,306 t	-11 %
			Minor metals	766 t	-13 %
			Platinum group metals (PGMs)	6.5 t	-34 %
			Continuous cast wire rod output	880,000 t	0 %
			Copper shapes output	172,000 t	-3 %
			Flat rolled products + specialty wire output ³	131,000 t	-2 %

¹ Custom smelter production

² Prior-year figures adjusted

³ Prior-year figures include figures from sold assets

Copper Applications before (visible for people since ages)



Our metals for an innovative world: Copper makes the circular economy possible

Renewable energy



E-mobility



Digitalization



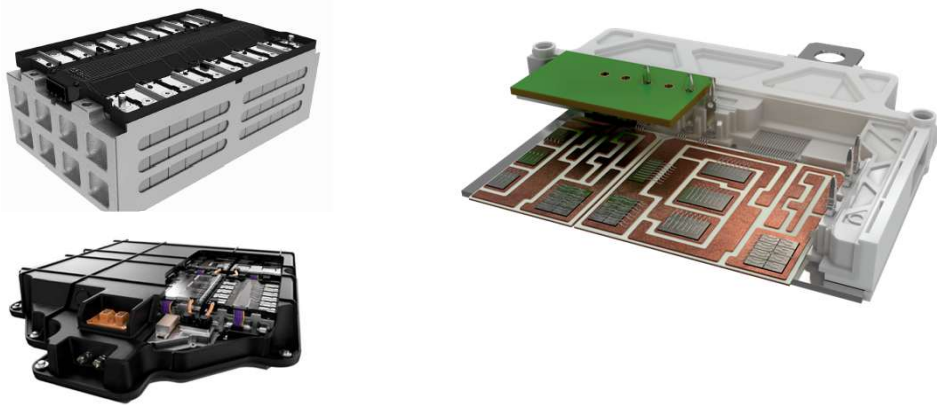
Urbanization



Rolled Copper Applications for today and tomorrow (invisible for people) 1/2

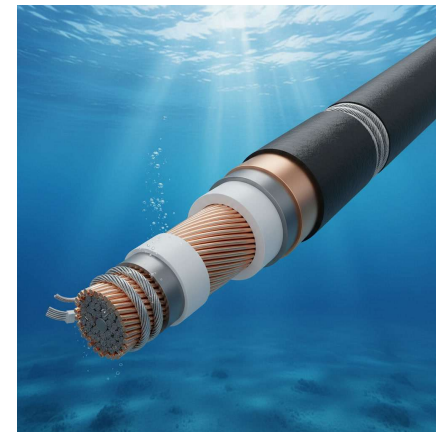
Renewable Energy and Electric Vehicles (EV's)

Thermal and power management in IGBT Power Modules (Connectors, Terminals, Press-Fits, Substrates (DCB/AMB/IMS), Base Plates, ...)



Data Cables for Connecting the World

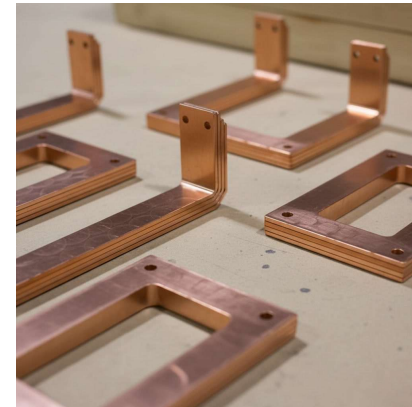
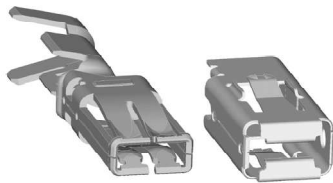
Signal conductivity, thermal performance, minimized cross-section, fatigue resistance, minimized losses...



Rolled Copper Applications for today and tomorrow (invisible for people) 2/2

Busbars, Connectors and Terminals

- Electrical industry in Northern Europe
- Modern data centers thermal and power management
- Urbanization's increased demand for connectivity

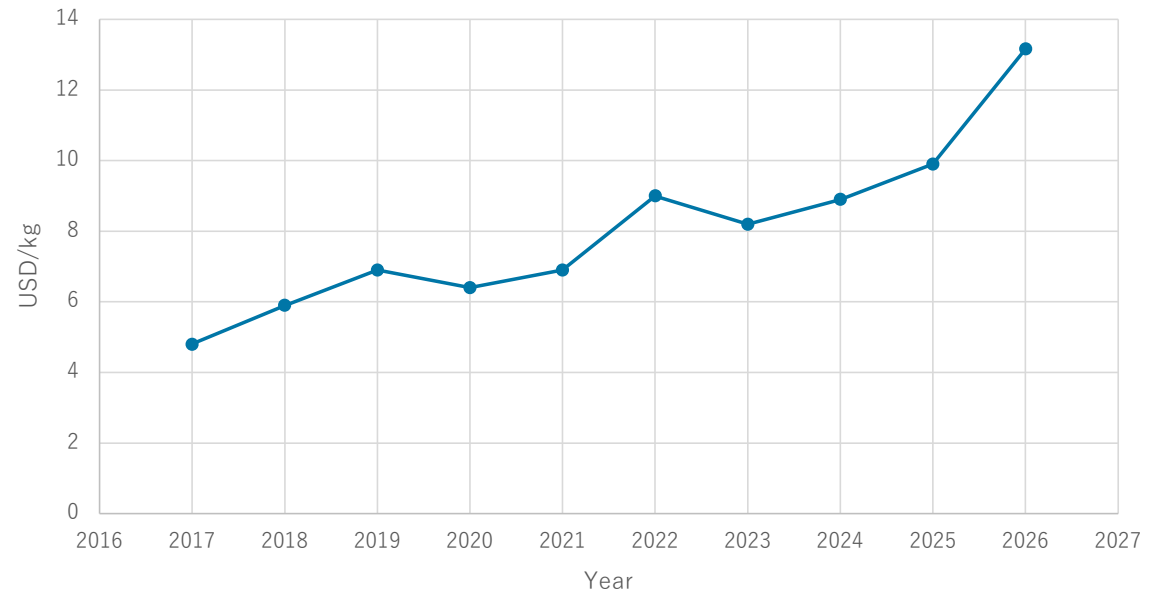


Copper raw material price development (London Metal Exchange)

- AI Infrastructure: Data center cooling and power needs are expected to add 500-600.000 tons of demand in Copper 2026-2028.
- ~70% of Cu wire
- ~30% of Cu rolled sheets and strips
- More details next slide

- Energy Transition: Electric vehicles (EVs) require 4x more copper than traditional cars

Copper LME trend



Copper in Data Centers

- Estimation 25-27 tons of Copper per MW in data center. 30% of rolled Cu about 8 t/MW.
- For EU total planned pipeline is 30.000 MW = 240.000 tons of rolled copper
- For Finland total planned pipeline is 3000 MW = 24.000 tons of rolled copper
- Aurubis Finland (only Northern European copper rolling mill) annual capacity ~50.000 tons

Applications made from copper in Data Centers:

Power distribution busbars

Rack-level and row-level power distribution

Grounding and bonding systems

UPS, PDU, and power module internals

Cooling and thermal systems

Copper in Data Centers

Key trends increasing rolled copper demand:

- Shift from cables → busbars
- Higher rack power density 400 V and 800 V
- distribution architectures
- AI/HPC workloads
- Modular, prefabricated electrical rooms
- Higher emphasis on energy efficiency (lower losses)



Aurubis Finland is entering the AI era with new investments

PRESS RELEASE June 10 2025

For immediate release

Aurubis Finland Invests in Pori Production and Green Energy – Advancing Efficient and Responsible Industry in Satakunta

Aurubis Finland Oy is investing a total of EUR 9 million in the introduction of a new production line at its Pori facility. At the same time, the company has transitioned to using only CO₂-free electricity as of the beginning of 2025 and is expanding its own solar energy production. These actions reinforce the company's commitment to both regional industrial growth and its sustainability goals.

Aurubis Finland announces €9 million machinery investment to strengthen production

Aurubis Finland Oy, part of the international Aurubis Group, has announced a €9 million investment in new production machinery at its Pori site. The investment will enhance process safety and quality, increase production capacity, and improves delivery performance.

The new equipment is planned to be fully operational in 2027.

Thank you for your participation.

For further questions, contact:

Juuso Järvinen

+358 44 726 7899

j.jarvinen@aurubis.com

