

# Smarter Cities

by digitalization of key processes in built environment

Kari Tuukkanen  
Director, Digital Services



Creating the best infrastructure



# A one-stop shop for all infrastructure expertise



**Infra management consulting**



**Infrastructure asset management**



**Rock and geotechnical engineering**



**Urban streets and spaces**



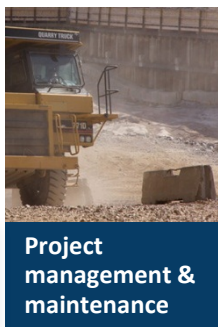
**Traffic and logistics**



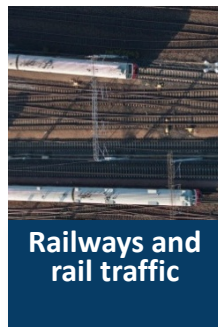
**Urban planning and land use**



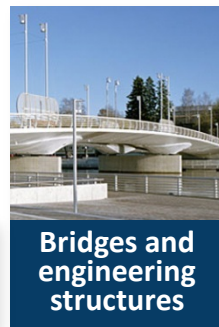
**Landscape**



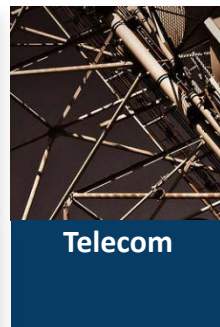
**Project management & maintenance**



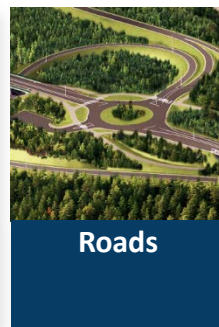
**Railways and rail traffic**



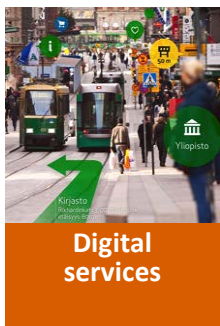
**Bridges and engineering structures**



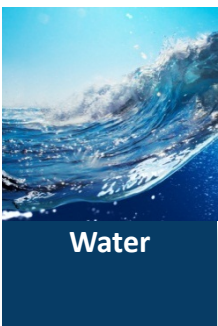
**Telecom**



**Roads**



**Digital services**



**Water**



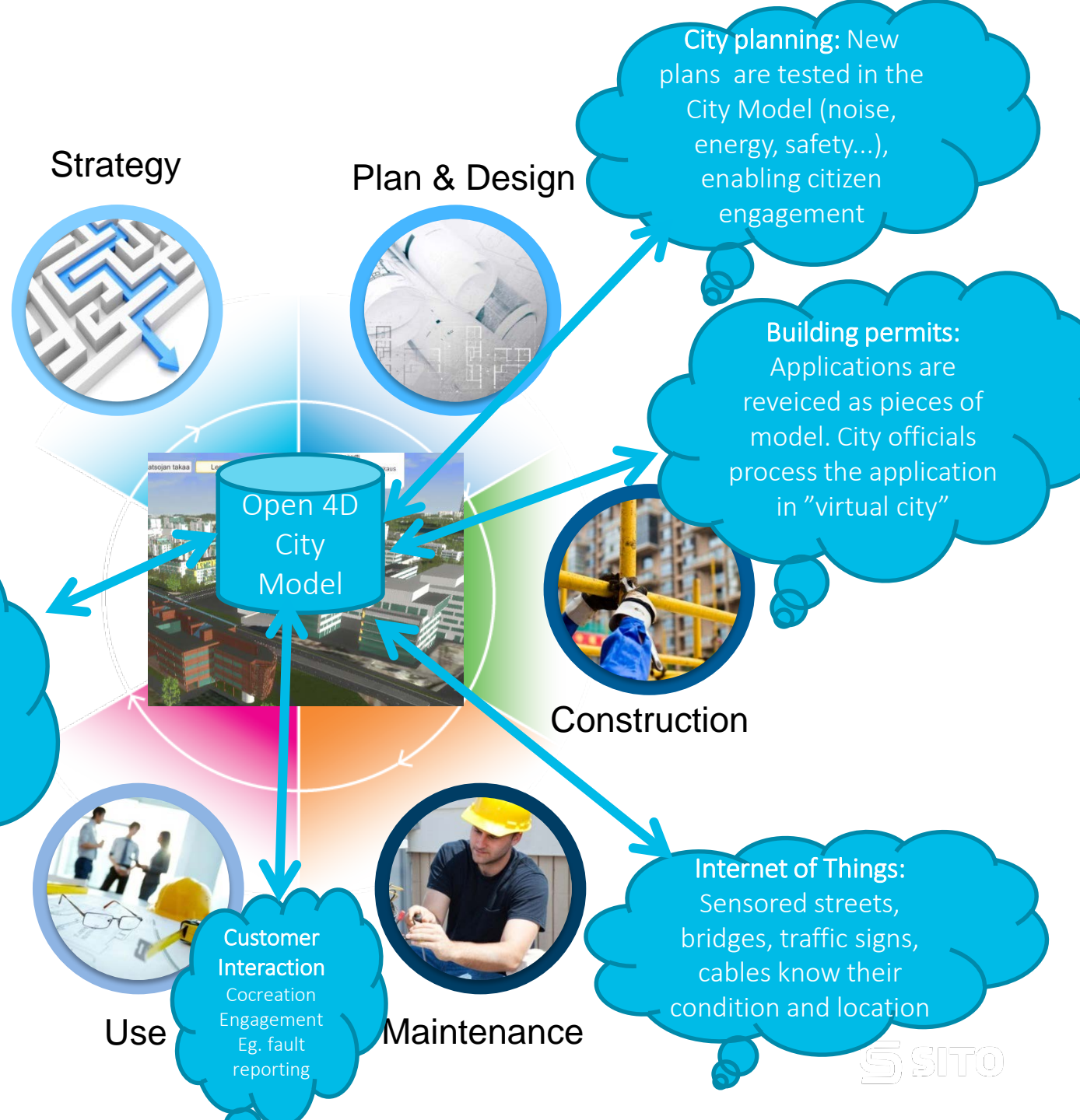
**Environment**

We are a multitalented company in infrastructure, traffic solutions, logistics, land use, environment and digital services.

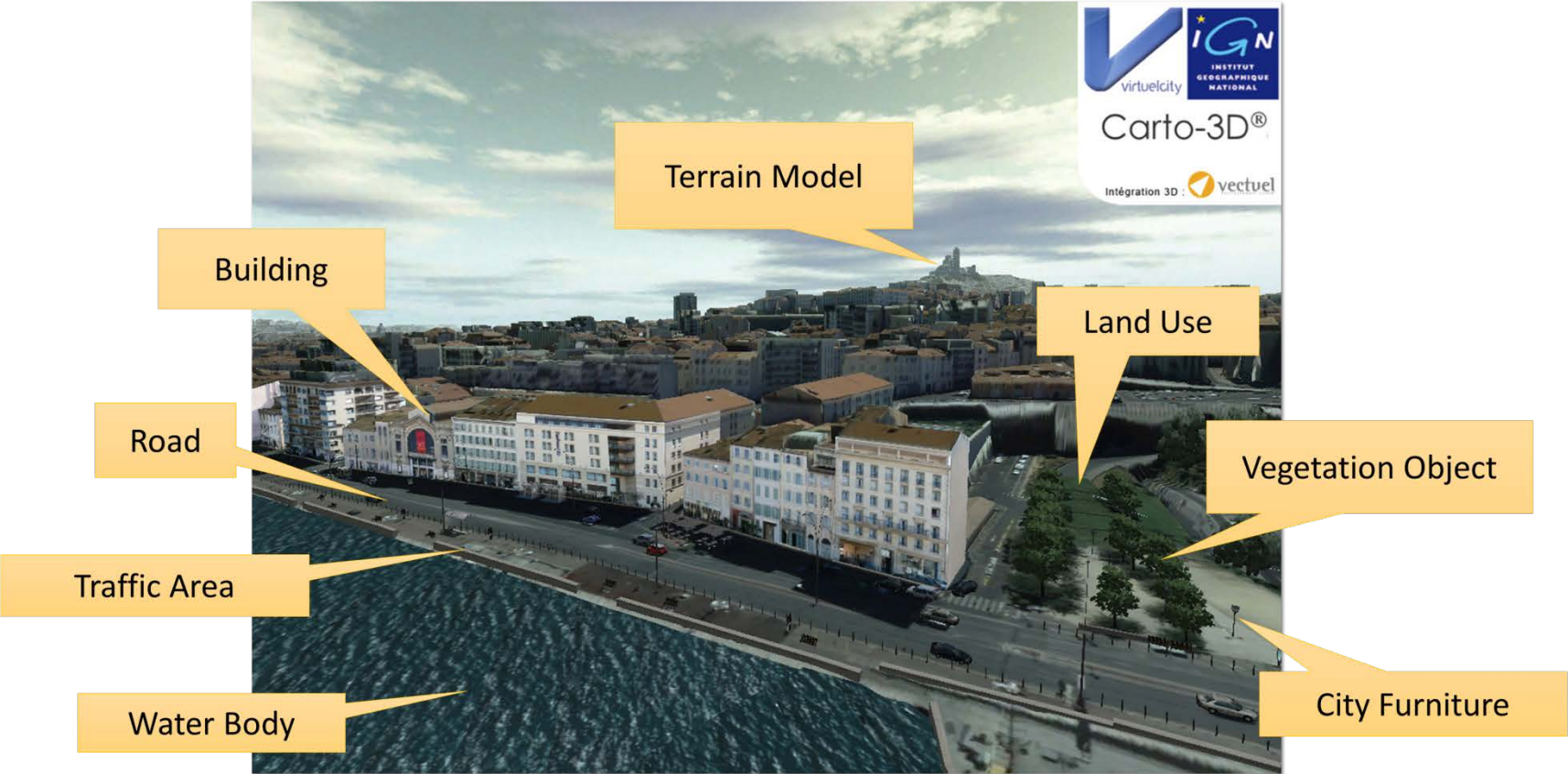
# Vision:

Digitalization enables

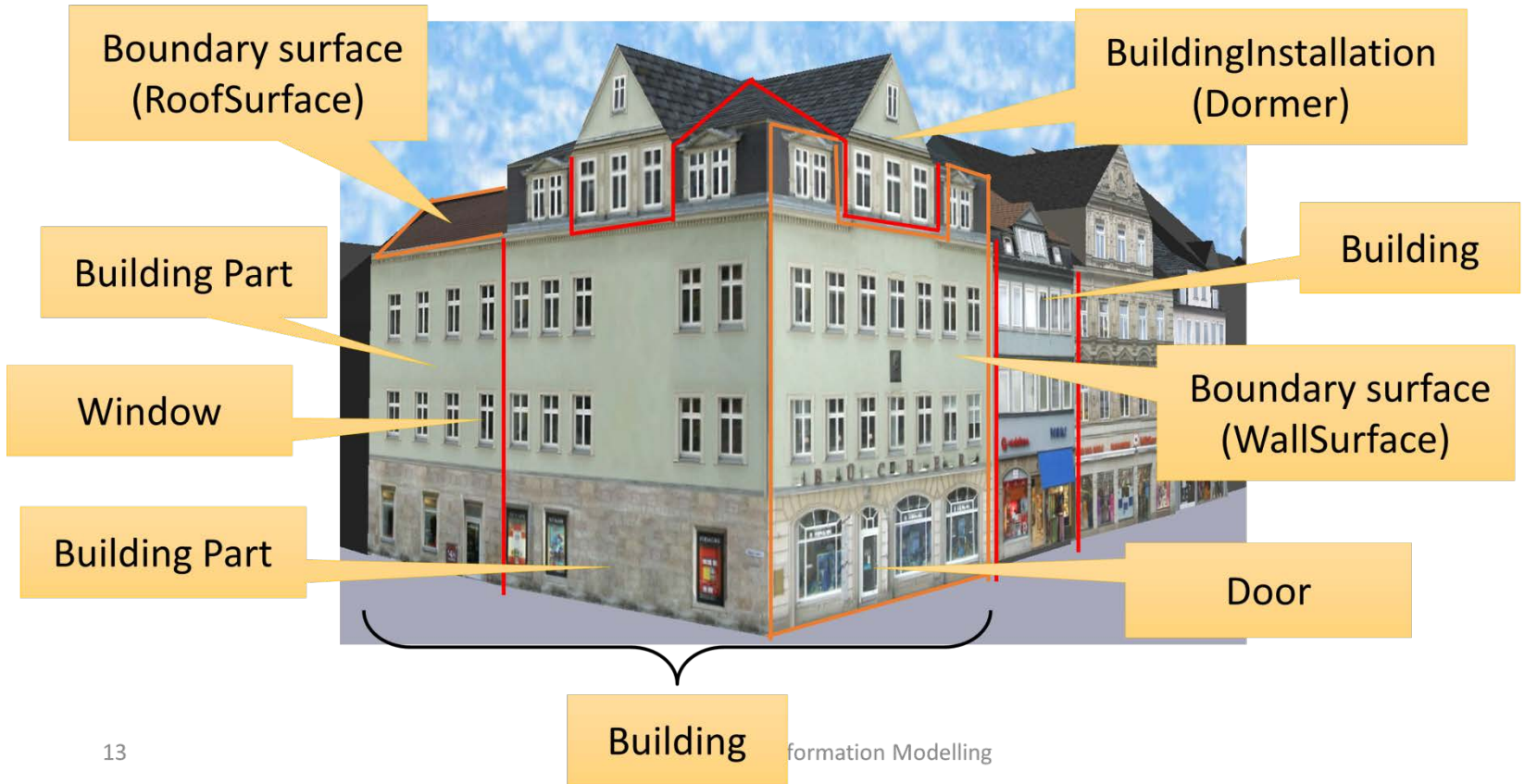
- Major savings in key processes
- New business innovations



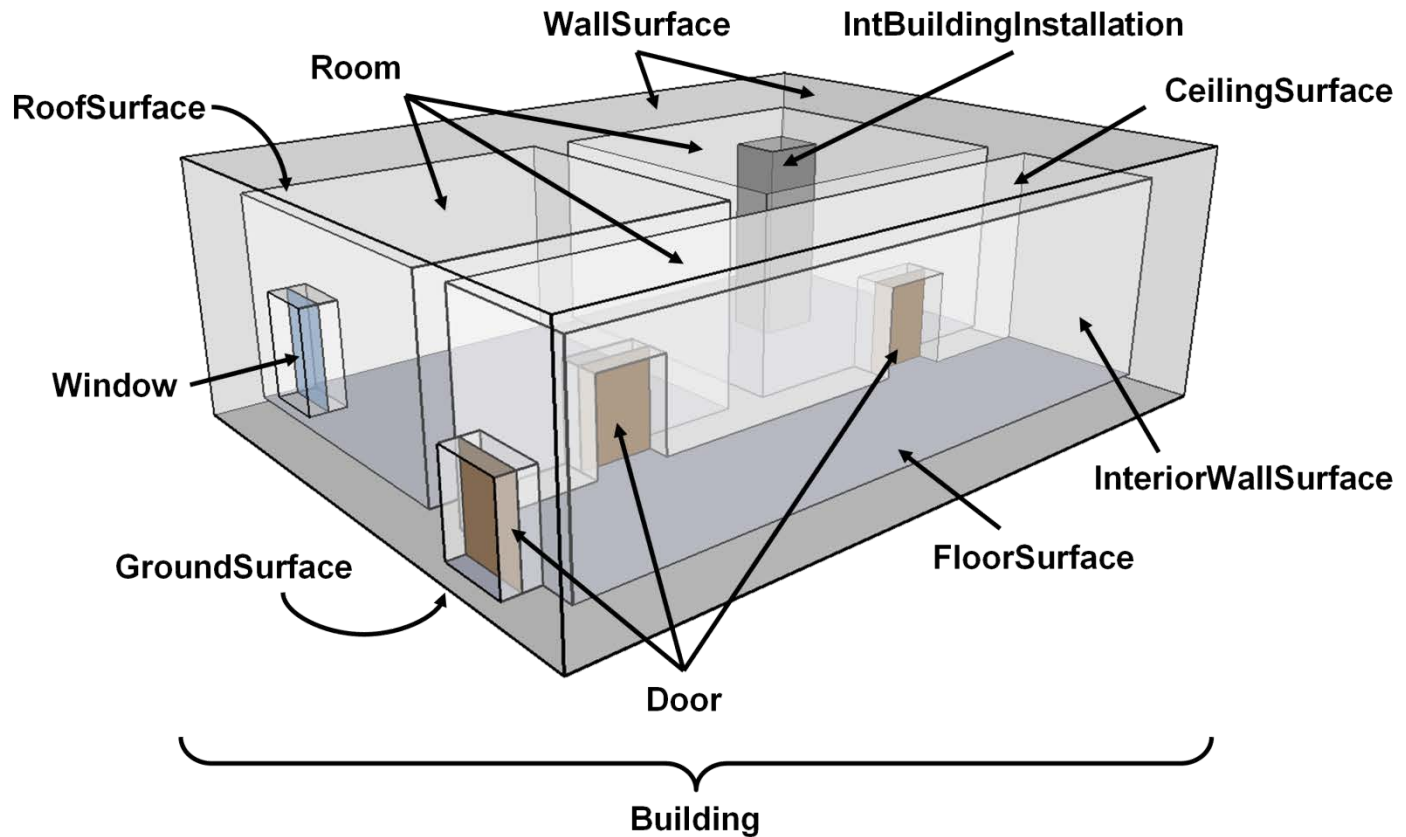
# Model your entire city



# Spatio-semantic decomposition



# Interior building model (LOD4)



# Videos & more

- [City Model as an Open Innovation Platform](#)
- [Espoo Innovation Garden - as a virtual model](#)
- More cases: <http://vrs3d.sito.fi>
- Article: <http://rym.fi/the-city-model-is-a-digital-user-interface-to-the-smart-city/>



# 4D City Model in building inspection



Selection: 23-179-3 Kameravalitsin  Visible  Highlight

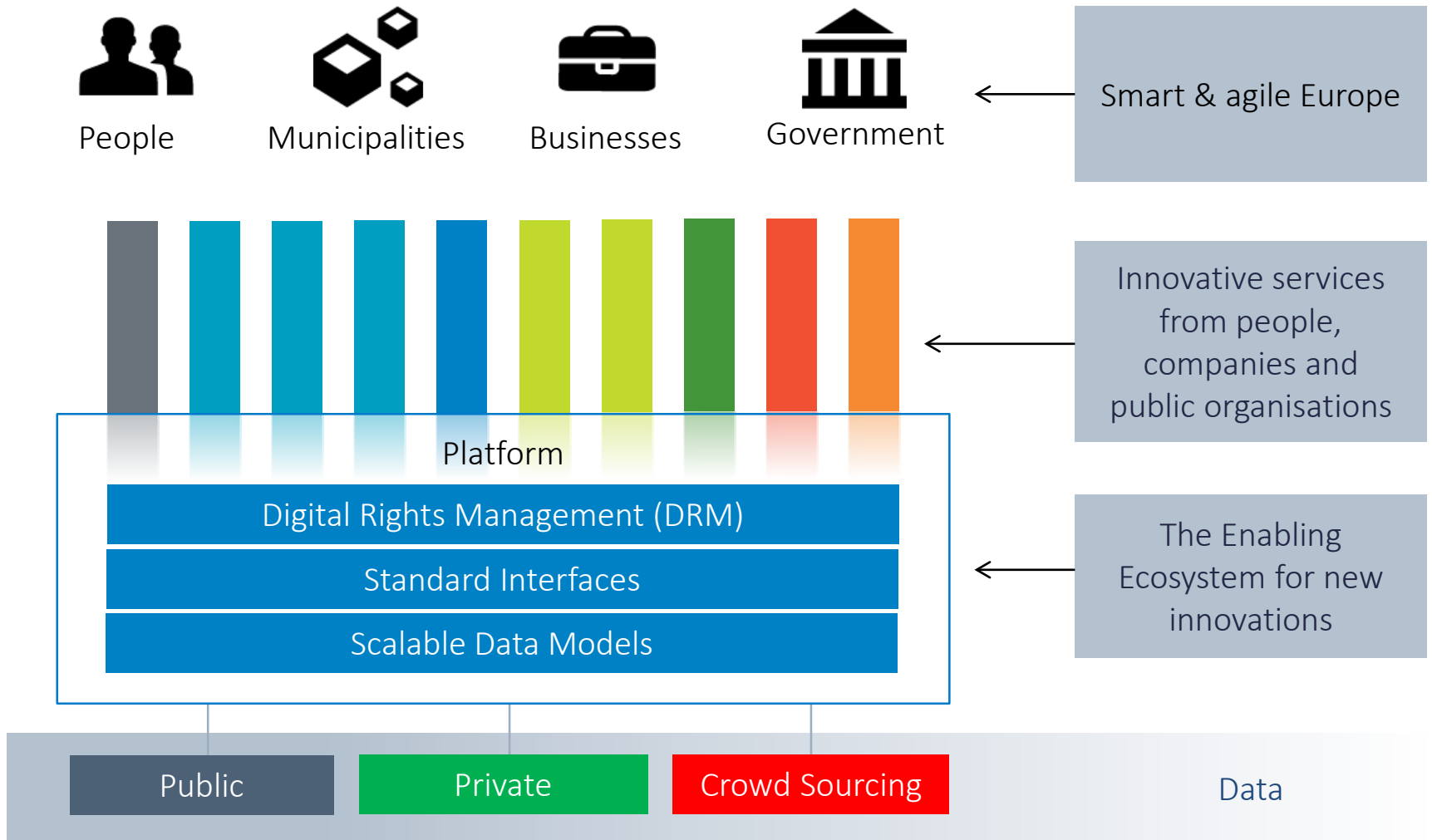
Timeline 4D



23-179-3 Description | 23-179-3 Description | 23-179-3 Description



# Vision: Open Platform for Innovations



**Project register  
Espoonportti**

Structural design model: 2005

**General inspection**

Bridge: ESP-231-12  
Status: Inspection  
16.11.2014

**General inspection**

Stop: 19234  
Elevated: Yes  
Shelter: Metal  
Condition: 4

**Road 11845**

AADT: 3,020  
Type: 821  
Surface: Asphalt Concrete  
Maintenance: 2014 Espoo

Thank You!

[Kari.tuukkanen@sito.fi](mailto:Kari.tuukkanen@sito.fi)

